

## SHELL BONGA FPSO PROJECT REPORT



# Shell Bonga FPSO

## Miscellaneous Flange Assembly Encapsulation - Enviropeel Coating Pictorial Report

Report Date: January 20, 2019

Location: 120 km south-west of the Niger Delta

### Introduction:

Bonga is a deep-water project for the Shell Nigeria Exploration and Production Company (SNEPCO), who operate the field on behalf of the Nigerian National Petroleum Corporation (NNPC) and its partners under a production sharing contract. The partners in the field include Shell (55%), Esso (20%), Total (12.5%) and Agip (12.5%). Production from the field started in November 2005 and delivered 819 million barrels of oil by the end of 2018. The photographs were taken shortly after encapsulation.

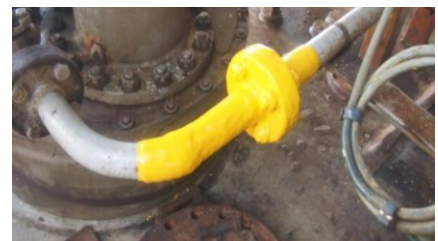


22" Flange

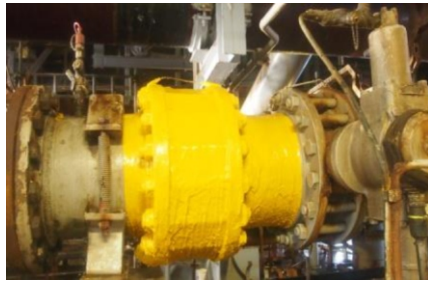
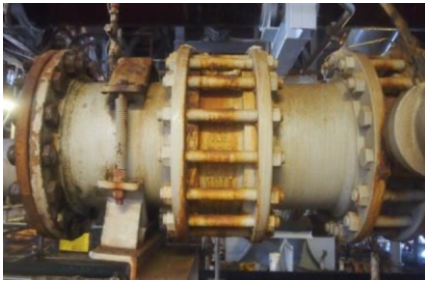


22" Spaced & 1 x 6" Flange

6" Flange & damaged pipe



All the images on this and following pages are before and after photographs of various substrates on the FPSO that were encapsulated using Enviropeel.



12" Flange, 12" Hatch and 22" Spaced Flange

22" Spaced Flange

12" Flange, 12" Hatch and a 6" Flange encapsulation



2 x 22" Enviropeel Flange encapsulation



12" Flange, 12" Hatch and 2 x 6" Flange encapsulations

